



Artist's concept. E.&O.E.

Designer Finished Homes

# SUITE 209

1,224 SQ. FT. - MODEL 23







Artist's concept. E.&O.E.

# Designer Finished Homes

## **SUITE 209**

### 1,224 SQ. FT. - MODEL 23

Our award-winning Interior Design Team has hand selected all of the show-stopping features and finishes in this unique eQ Designer Finished Home. Your future home boasts a harmonious blend of the finest interior appointments, all designed to enrich your life.



Designer Finished Homes

**SUITE 209**

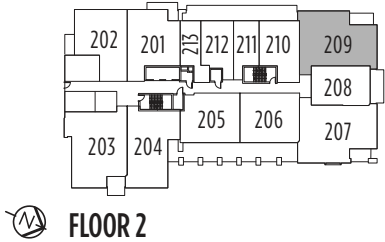
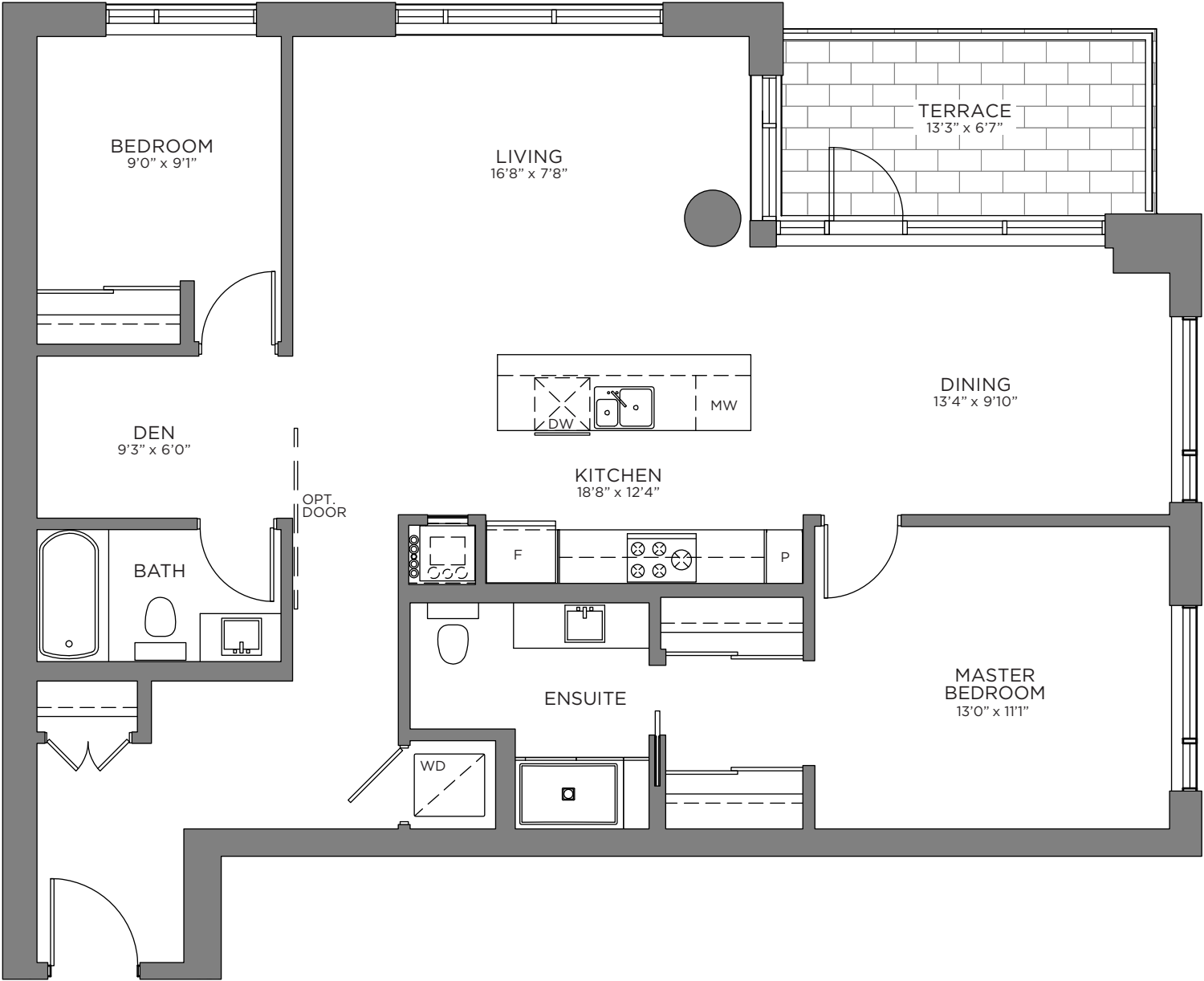
1,224 SQ. FT.

WITH 92 SQ. FT. TERRACE

MODEL 23



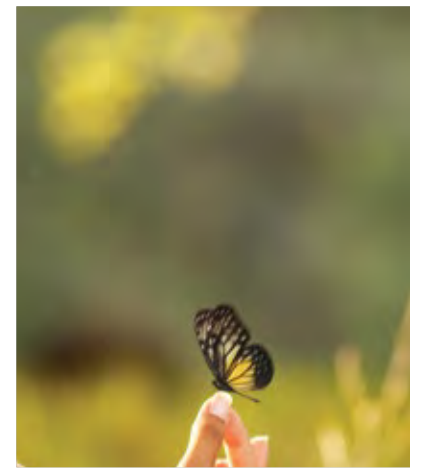
All drawings are artist's concept and may vary slightly from the final product. Actual usable floorspace may vary from stated area, and square footage has been calculated based on usable living space according to the TARIION rules and does not include garage or unfurnished basement areas. Drawings may show optional features which may not be included in the base price. Bulkheads & box outs may be required as chases for plumbing & mechanical. Garage main door location, if applicable, may vary subject to grade. Specifications subject to change without notice. Manufacturers' images are shown and may differ from the final product. E. & O.E. May 2020.







# OUR COMMUNITY





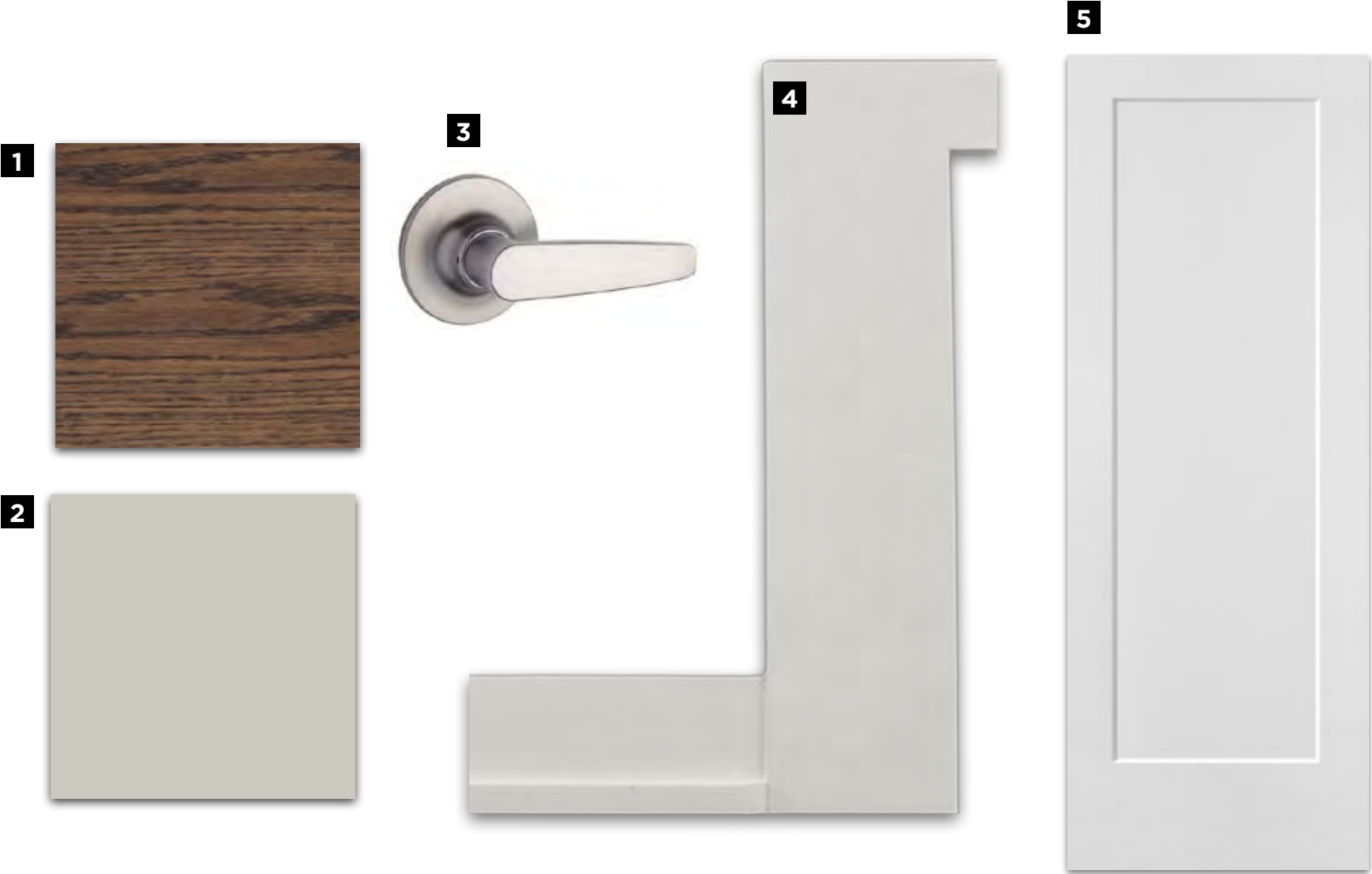
# THE COMMUNITY SITE PLAN



Luxury meets modern sophistication in Suite 209. Experience a fusion of elegant design with high-end, brand-name appointments such as Silestone countertops, sleek Moen fixtures, custom-designed kitchen cabinetry, exquisite engineered hardwood floors, top-of-the-line appliances. Welcome home to the refined living of Suite 209 at Greystone Village.

MAKE A GRAND ENTRANCE  
WITH AN EXQUISITE  
DOOR HARDWARE, FLOOR &  
TRIM PACKAGE

INTERIOR



E.&O.E.

**1**  
**HARDWOOD FLOORING**  
Torlys Red Oak - Hearthstone  
HCU57112

**2**  
**INTERIOR PAINT**  
Sherwin Williams  
- Repose Grey

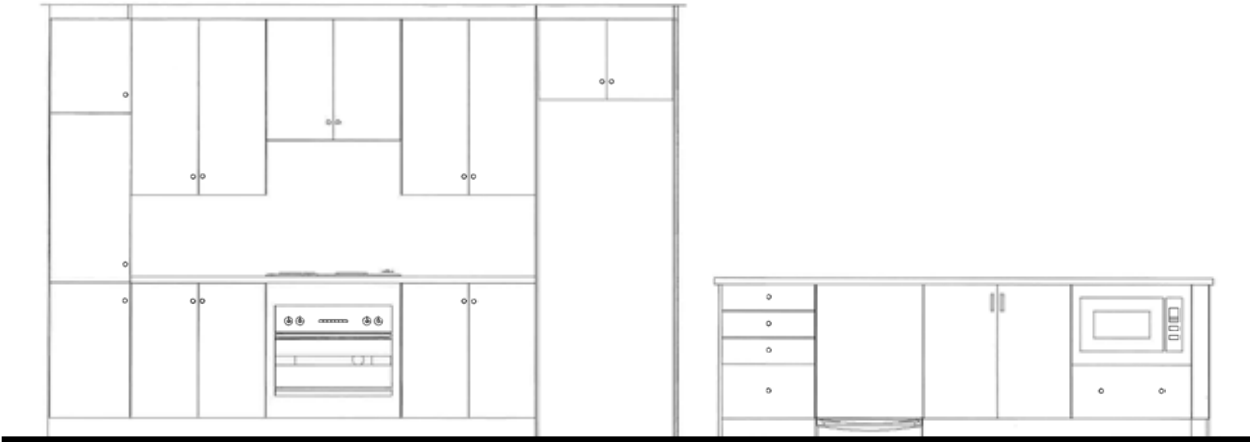
**3**  
**INTERIOR DOOR HARDWARE**  
Erie Lever Handles -  
Brushed Chrome

**4**  
**TRIM PACKAGE**  
2828-9 Baseboard, L3513-9 Casing &  
4086-9 Shoe

**5**  
**INTERIOR DOORS**  
Madison Interior  
Doors

A GREAT RECIPE STARTS WITH A  
GOURMET CHEF KITCHEN

GOURMET KITCHEN



KITCHEN CABINET AND ISLAND LAY-OUT

E.&O.E.

**1**  
**COUNTERTOP**  
Silestone  
Quartz -  
White North

**2**  
**BACKSPLASH**  
Olympia 3x6 Colour & Dimension  
Collection - Horizontally Stacked  
- Tender Grey

**3**  
**DOOR PULL**  
Richelieu  
305160195

**4**  
**CABINETRY**  
Shaker 151 -  
White

**5**  
**KITCHEN FAUCET**  
Moen Align Single  
Hole Pull Down  
Chrome - 7565

**6**  
**KITCHEN SINK**  
Kindred 1 1/2 Bowl  
Stainless Steel Undermount  
- QCUA 1827/R18



SLEEK APPLIANCES  
THAT LOOK GOOD AND  
PERFORM BETTER

## APPLIANCES



E.&O.E.

**1**  
**HOOD FAN**  
Faber  
CRIS30SSH300

**2**  
**COOKTOP**  
AEG 75040GM-M-F

**3**  
**WALL OVEN**  
AEG B3007H-B

**4**  
**MICROWAVE**  
Panasonic NNST775S  
c/w NNTK722S Trim  
Kit

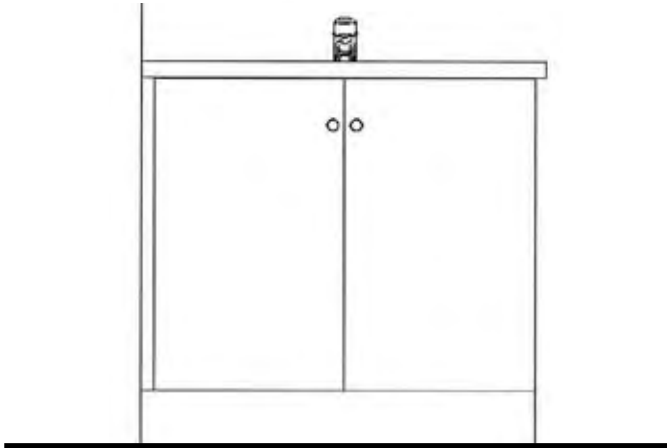
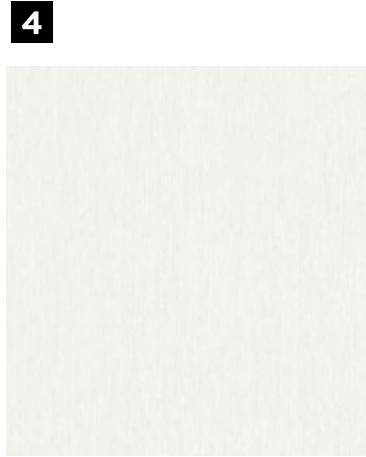
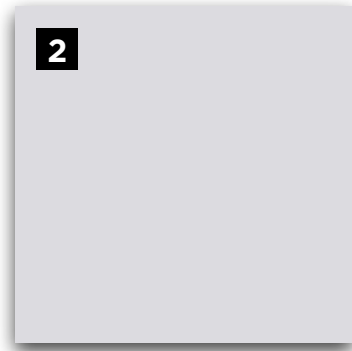
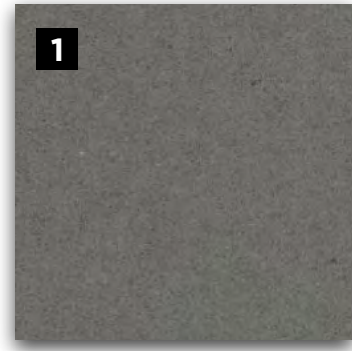
**5**  
**DISHWASHER**  
Panel Ready

**6**  
**REFRIGERATOR**  
Liebherr CS  
1400R-IM

**7**  
**WASHER & DRYER**  
Gorenje 7443L &  
Gorenje D722CM

FULL BATHROOMS  
A BLEND OF LUXURY  
& MODERNITY

MAIN BATH



MAIN BATH CABINET LAY-OUT

E.&O.E.

1

**COUNTERTOP**  
Silestone  
Quartz -  
Grey Expo

2

**SHOWER WALL  
TILE**  
Ceratec Mirage  
8x24 Horizontal  
Stacked Pattern  
- Glossy White

3

**FLOORING**  
Ceratec Paros 12x24-  
1/3 offset pattern -  
Taupe

4

**CABINETRY**  
Latitude  
North Flat  
Slab

5

**VANITY SINK**  
American  
Standard  
Studio  
0614.000

6

**DOOR PULL**  
Richelieu  
305160195

7

**TOILET**  
American  
Standard  
Studio Dual  
Flush

8

**VANITY  
FAUCET**  
Moen Method  
Single Hole  
Chrome -  
6810

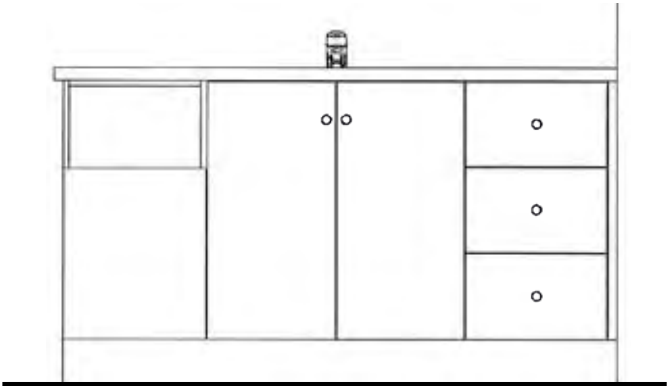
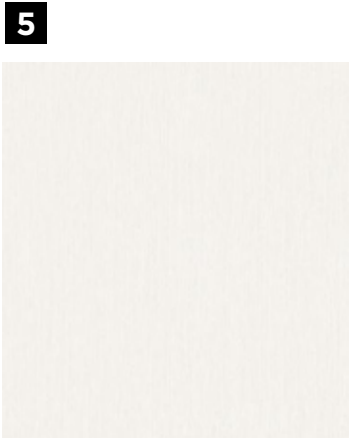
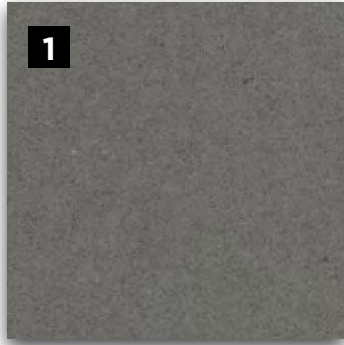
9

**TUB/SHOWER FIXTURE**  
Moen Method Posi-  
Temp Chrome Tub/  
Shower - T62803



A SUMPTUOUS MASTER ENSUITE  
YOUR COZY PRIVATE RETREAT

ENSUITE



MAIN BATH CABINET LAY-OUT

E.&O.E.

1

**COUNTERTOP**  
Silestone  
Quartz -  
Grey Expo

2

**FLOORING**  
Ceratec Paros  
12x24- 1/3  
Offset Pattern  
- Taupe

3

**ENSUITE  
SHOWER  
FLOOR**  
Maax B3 Pre-  
finished Base

4

**SHOWER WALL  
TILE**  
Ceratec Mirage  
8x24 Horizontal  
Stacked Pattern  
- Glossy White

5

**CABINETRY**  
Latitude  
North Flat  
Slab

6

**VANITY SINK**  
American  
Standard  
Studio  
0614.000

7

**DOOR PULL**  
Richelieu  
305160195

8

**TOILET**  
American  
Standard  
Studio Dual  
Flush

9

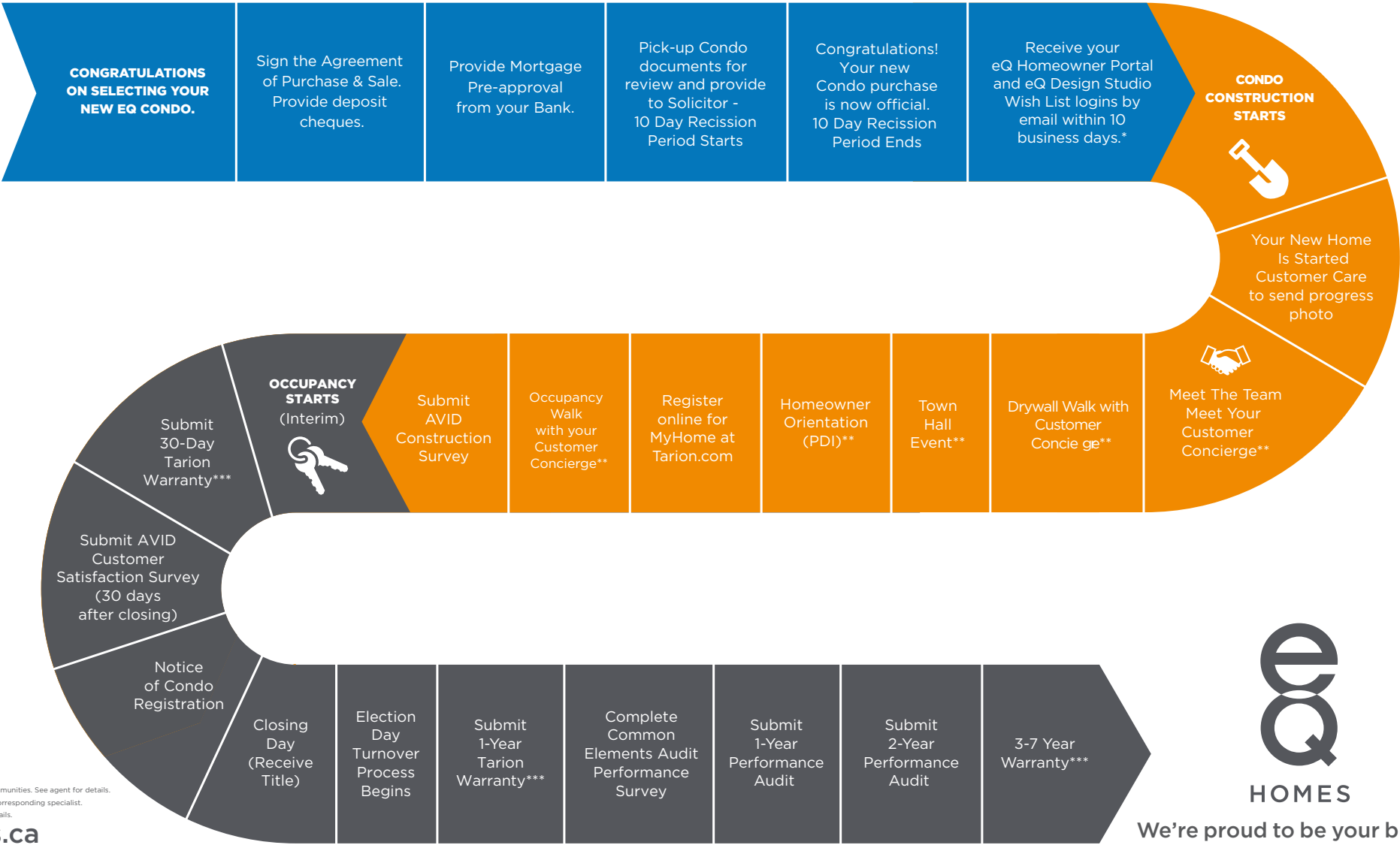
**VANITY  
FAUCET**  
Moen Method  
Single Hole  
Chrome -  
6810

10

**TUB/SHOWER  
FIXTURE**  
Moen Method Posi-  
Temp Chrome Shower  
with Moen Engage  
26100EP - T62803

# The eQ Designer Finished Condo Buyer's Journey.

**Enduring Quality.** It starts with the design of your eQ Home and continues throughout the entire home buying process. We will be by your side, step by step, answering your questions - before, during and after construction. Because the qualities of confidence and peace of mind should endure longest of all



\* Wish List not available for all communities. See agent for details.  
\*\* Dates to be sent via email from corresponding specialist.  
\*\*\* See your Tarion Warranty for Details.





223 MAIN STREET, OTTAWA, ON  
K1S 1C5  
TEL: 613-569-3043  
EMAIL: [sales@greystonevillage.ca](mailto:sales@greystonevillage.ca)



All drawings are artist's concept and may vary slightly from the final product. Actual usable floorspace may vary from stated area, and square footage has been calculated based on usable living space according to the TARIION rules and does not include garage or unfurnished basement areas. Drawings may show optional features which may not be included in the base price. Bulkheads & box outs may be required as chases for plumbing & mechanical. Garage main door location, if applicable, may vary subject to grade. In an ongoing review of homeowner's needs, changes may have been incorporated into our "New Home Features" and construction techniques. Specifications subject to change without notice. Manufacturers' images are shown and may differ from the final product. E. & O.E. May 2020.