



Artist's concept. E.&O.E.

Designer Finished Homes

**SUITE 901**

**PENTHOUSE**

2,156 SQ. FT. - MODEL 36





530  
TERRACES  
AT GREYSTONE

570  
TERRACES  
AT GREYSTONE

Artist's concept. E.&O.E.

Designer Finished Homes

# SUITE 901

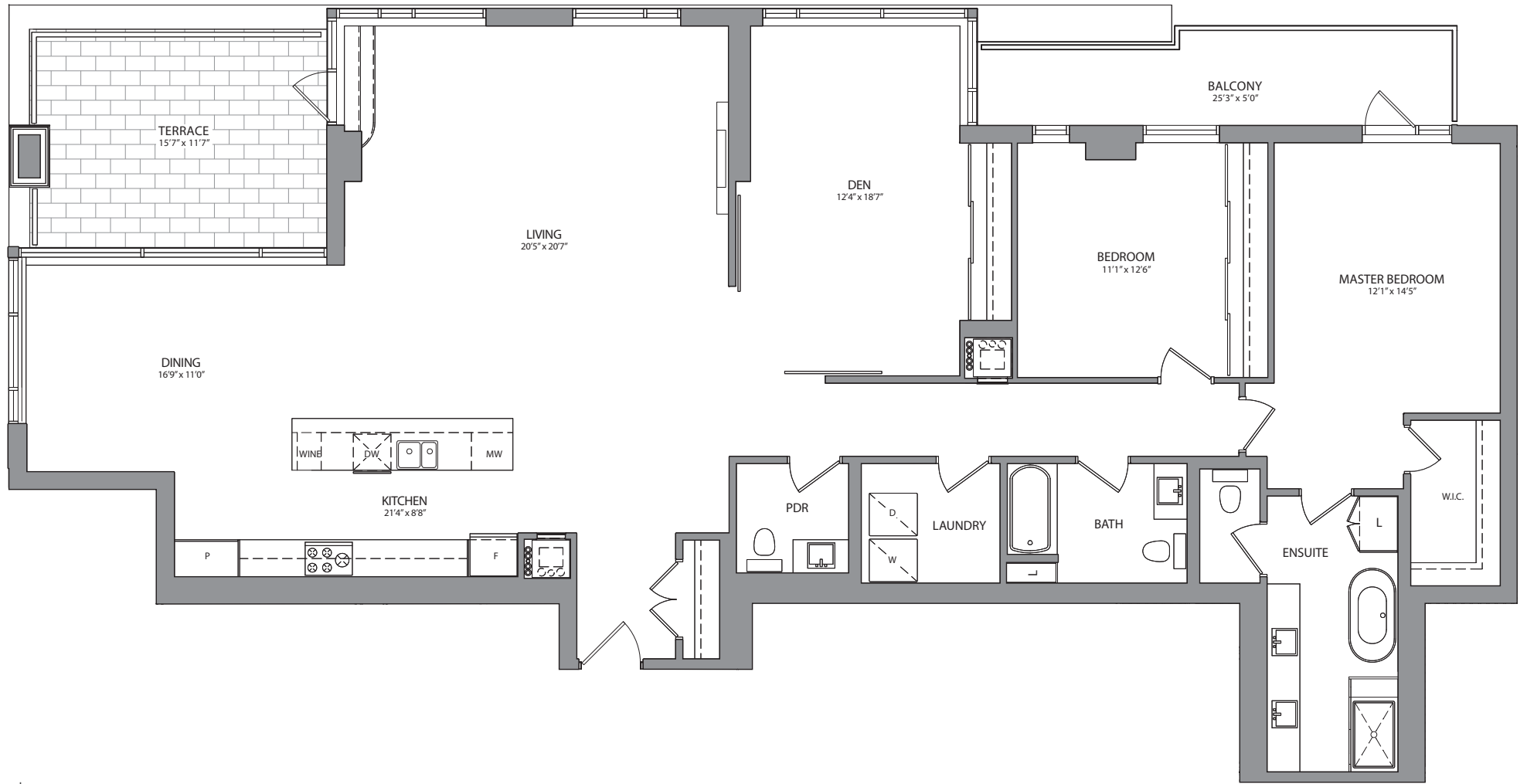
## PENTHOUSE

2,156 SQ. FT. - MODEL 36

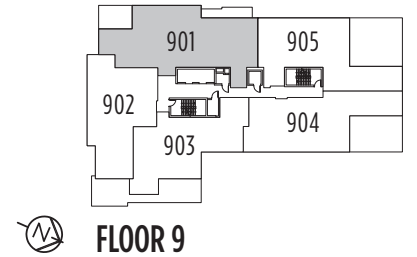
Our award-winning Interior Design Team has hand selected all of the show-stopping features and finishes in this unique eQ Designer Finished Home. Your future home boasts a harmonious blend of the finest interior appointments, all designed to enrich your life.



Designer Finished Homes  
**SUITE 901**  
PENTHOUSE  
2,156 SQ. FT.  
WITH 281 SQ. FT. BALCONY/TERRACE  
MODEL 36

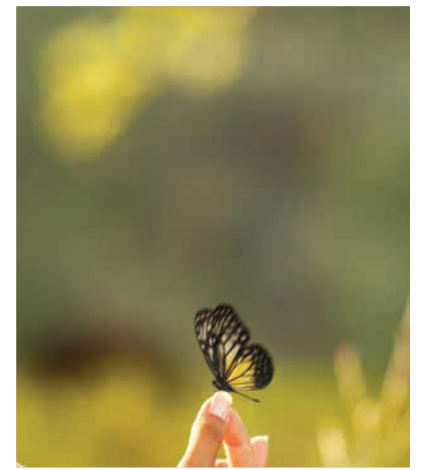


All drawings are artist's concept and may vary slightly from the final product. Actual usable floorspace may vary from stated area, and square footage has been calculated based on usable living space according to the TARIION rules and does not include garage or unfurnished basement areas. Drawings may show optional features which may not be included in the base price. Bulkheads & box outs may be required as chases for plumbing & mechanical. Garage main door location, if applicable, may vary subject to grade. Specifications subject to change without notice. Manufacturers' images are shown and may differ from the final product. E. & O.E. September 2020.

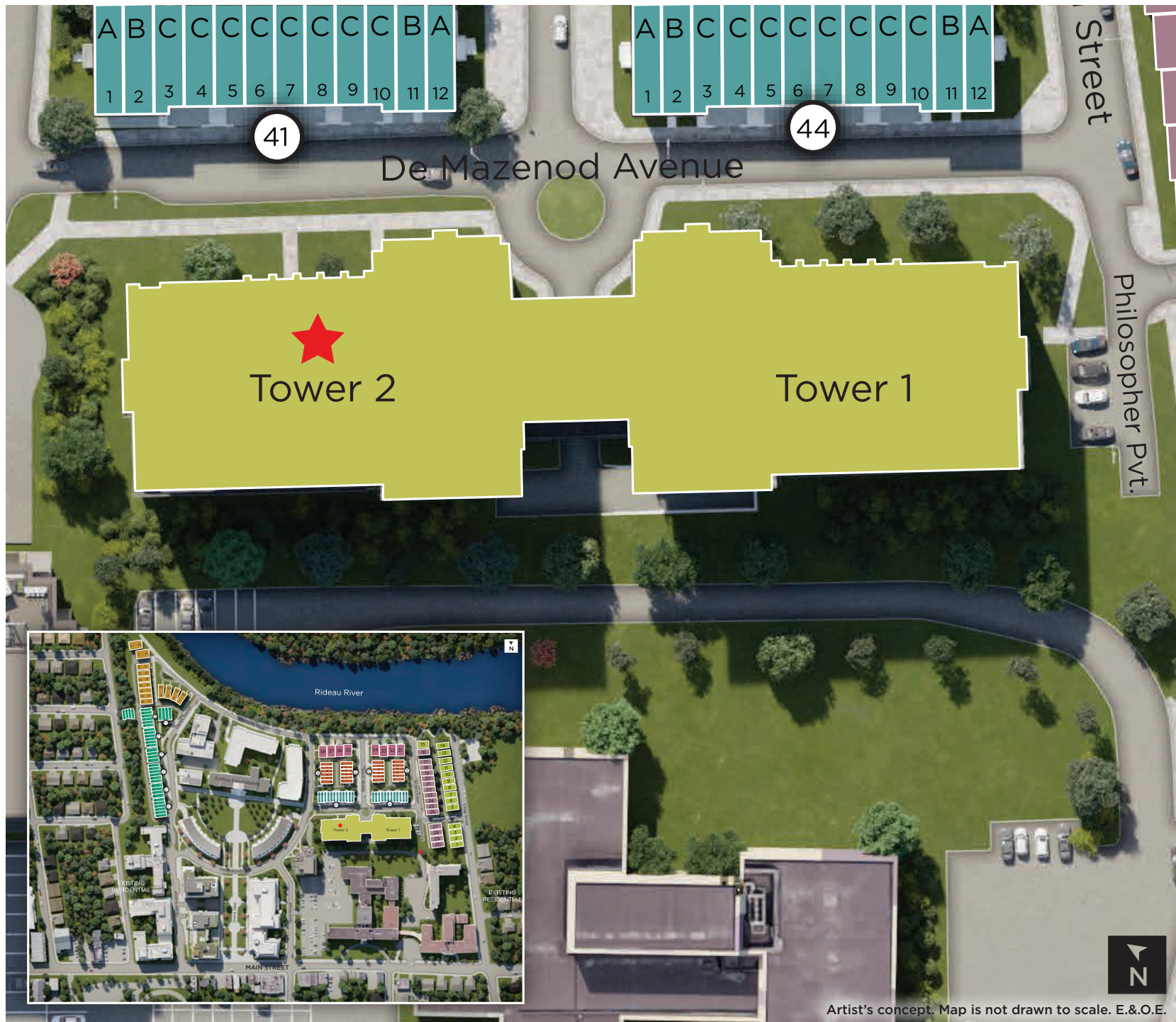




# OUR COMMUNITY



THE COMMUNITY  
SITE PLAN



Artist's concept. Map is not drawn to scale. E.&O.E.

Luxury meets modern sophistication in Penthouse Suite 901.

Experience a fusion of elegant design with high-end, brand-name appointments such as Silestone countertops, sleek Moen fixtures, custom-designed gourmet kitchen cabinetry, exquisite engineered hardwood floors, high ceilings, custom built-in electric fireplace, top-of-the-line appliance, oversized terrace looking onto the City. Welcome home to the refined living of Penthouse Suite 901 at Greystone Village.

# THE VIEW



The view is approximate. E. & O.E.

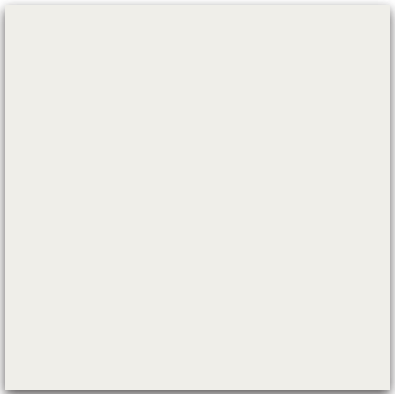
MAKE A GRAND ENTRANCE  
WITH AN EXQUISITE  
DOOR HARDWARE, FLOOR &  
TRIM PACKAGE

INTERIOR

1



2



3



4



5



E.&O.E.

1

**HARDWOOD FLOORING**

Torlys Corkwood Elite - River  
Run Oak - CW-EL522-FSC-MX

2

**INTERIOR PAINT**

Sherwin Williams  
- Pure White

3

**INTERIOR DOOR HARDWARE**

Erie Lever Handles -  
Brushed Chrome

4

**TRIM PACKAGE**

2828-9 Baseboard, L3513-9 Casing &  
4086-9 Shoe

5

**INTERIOR DOORS**

Madison Interior  
Doors



THE FIREPLACE CENTREPIECE  
ADDS WARMTH AND AMBIENCE  
TO YOUR HOME

## FIREPLACE

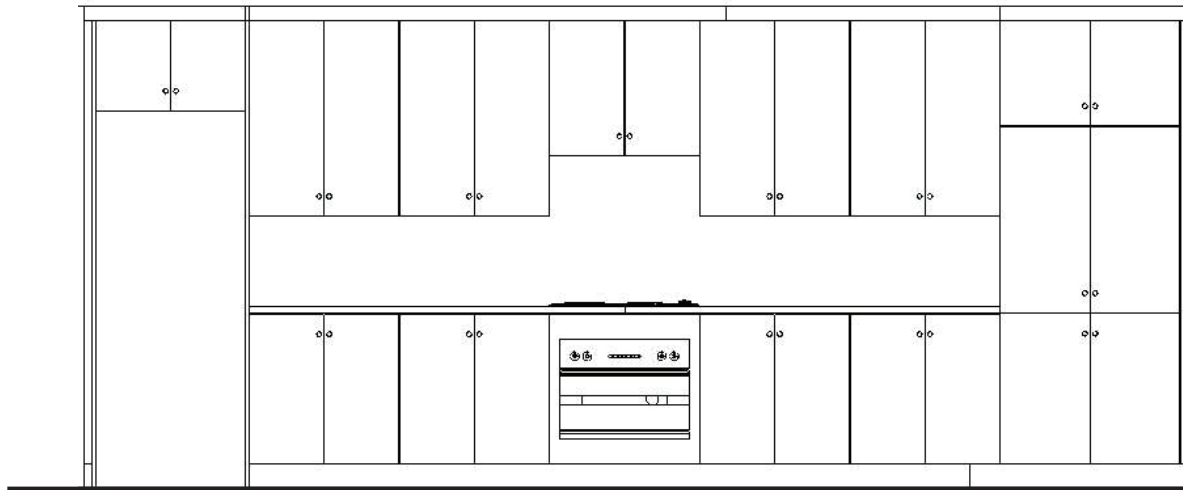
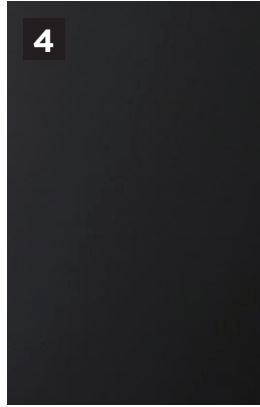


**1**  
**FIREPLACE INSERT**  
Napoleon Phantom  
Allure 42

**2**  
**TILE SURROUND**  
Centura 24x24 Glocal Series Absolute Natural  
- On front and sides of fireplace build-out  
from floor to ceiling.

A GREAT RECIPE STARTS WITH A  
**GOURMET CHEF KITCHEN**

**GOURMET KITCHEN**



KITCHEN CABINET LAY-OUT



ISLAND LAY-OUT

E.&O.E.

**1**  
**COUNTERTOP**  
 Cambrian Black  
 Granite with  
 Leathered Finish

**2**  
**BACKSPLASH**  
 Ceratec 4x5 Hex Series Black  
 Matte and Black Glossy -  
 Random Pattern

**3**  
**DOOR PULL**  
 BP57606170

**4**  
**CABINERY BASE  
 CABINETS, PANTRY &  
 FRIDGE**  
 Lastra Ultra Matte - Nightfall

**5**  
**CABINERY  
 UPPERS & ISLAND**  
 Frati Barrel Oak  
 (flat profile)

**6**  
**KITCHEN FAUCET**  
 Moen Align Matte  
 Black - 7565BL.

**7**  
**KITCHEN SINK**  
 Kindred KCUS  
 30A/10-10BG

SLEEK APPLIANCES  
THAT LOOK GOOD AND  
PERFORM BETTER

## APPLIANCES



**1**  
HOOD FAN  
Faber  
CRIS30SSH300

**2**  
COOKTOP  
AEG 75040GM-M-F

**3**  
WALL OVEN  
AEG B3007H-B

**4**  
MICROWAVE  
Panasonic  
NNST775S c/w  
NNTK722S Trim Kit

**5**  
DISHWASHER  
Blomberg  
DW51600FBI

**6**  
WINE FRIDGE  
Silhouette  
Tuscany - DW-  
C031D1BSSPR

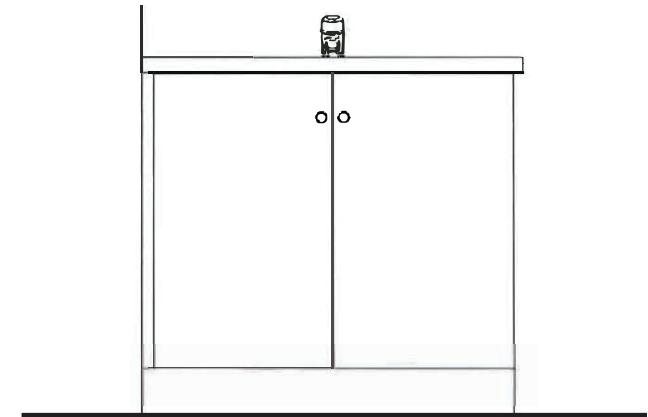
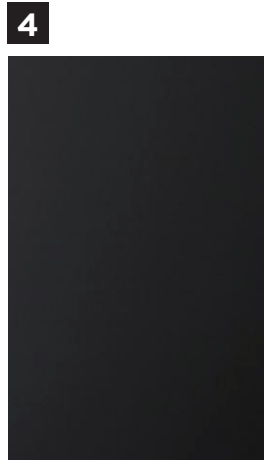
**7**  
REFRIGERATOR  
Blomberg 30"  
BRFB1920FBI

**8**  
WASHER & DRYER  
Blomberg WM772200Q  
Washer & Blomberg  
DV17600W Dryer

E.&O.E.

MAKE YOUR GUESTS FEEL AT HOME AND  
 FRESHEN UP IN YOUR GORGEOUS  
**POWDER ROOM**

# POWDER ROOM



POWDER ROOM CABINET LAY-OUT E.&.O.E.

**1**  
**COUNTERTOP**  
 Caesarstone  
 4001 Fresh  
 Concrete  
 Quartz

**2**  
**FLOORING**  
 Euro 12x24  
 Pasha Nexus -  
 Ice - Stacked  
 Pattern

**3**  
**DOOR PULL**  
 BP57606170

**4**  
**CABINETRY**  
 Lastra Ultra  
 Matte -  
 Nightfall

**5**  
**VANITY SINK**  
 American  
 Standard  
 Studio  
 0614.000

**6**  
**VANITY  
 FAUCET**  
 Moen Align  
 Matte Black  
 - 6190BL

**7**  
**TOILET**  
 American  
 Standard  
 Studio Dual  
 Flush

**FULL BATHROOMS**  
A BLEND OF LUXURY  
& MODERNITY

**MAIN BATH**



MAIN BATH CABINET LAY-OUT

E.&O.E.

**1**  
**COUNTERTOP**  
Caesarstone  
4001 Fresh  
Concrete  
Quartz

**2**  
**SHOWER WALL TILE**  
Ceratec Mirage  
8x24 Horizontal  
Stacked Pattern -  
Glossy White

**3**  
**FLOORING**  
Euro 12x24  
Pasha Nexus -  
Ice - Stacked  
Pattern

**4**  
**CABINETS**  
Lastra Ultra  
Matte -  
Nightfall

**5**  
**VANITY SINK**  
American  
Standard  
Studio  
0614.000

**6**  
**DOOR PULL**  
BP57606170

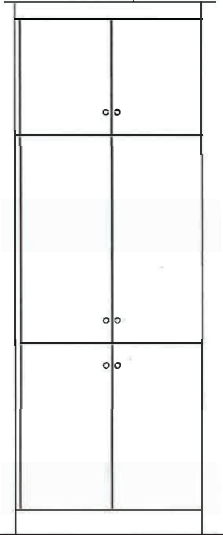
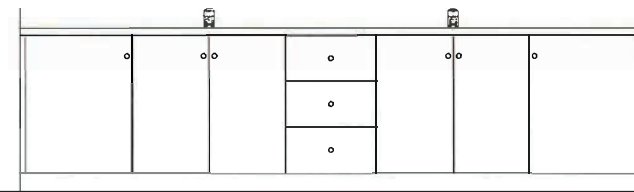
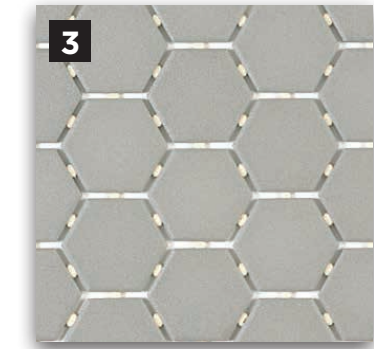
**7**  
**TOILET**  
American  
Standard  
Studio Dual  
Flush

**8**  
**VANITY FAUCET**  
Moen Align  
Matte Black -  
6190BL

**9**  
**TUB/SHOWER FIXTURE**  
Moen Align Matte Black  
T2193NHBL w/Moen  
26000BL Shower Head

**A SUMPTUOUS MASTER ENSUITE  
YOUR COZY PRIVATE RETREAT**

**ENSUITE**



ENSUITE CABINET LAY-OUT

E.&O.E.

**1**

**COUNTERTOP**  
Caesarstone  
4001 Fresh  
Concrete  
Quartz

**2**

**SHOWER  
WALL TILE**  
Ceratec  
Mirage 8x24  
Horizontal  
Stacked  
Pattern -  
Glossy White

**3**

**ENSUITE  
SHOWER  
FLOOR**  
Olympia  
Quebec  
Mosaics  
- Sterling  
Grey Hex

**4**

**FLOORING**  
Euro 12x24  
Pasha  
Nexus Ice -  
Stacked

**5**

**CABINETRY**  
Lastra Ultra  
Matte -  
Nightfall

**6**

**VANITY SINK**  
American  
Standard  
Studio  
0614.000

**7**

**DOOR PULL**  
BP57606170

**8**

**TOILET**  
American  
Standard  
Studio  
Dual  
Flush

**9**

**VANITY  
FAUCET**  
Moen Align  
Matte Black  
- 6190BL

**10**

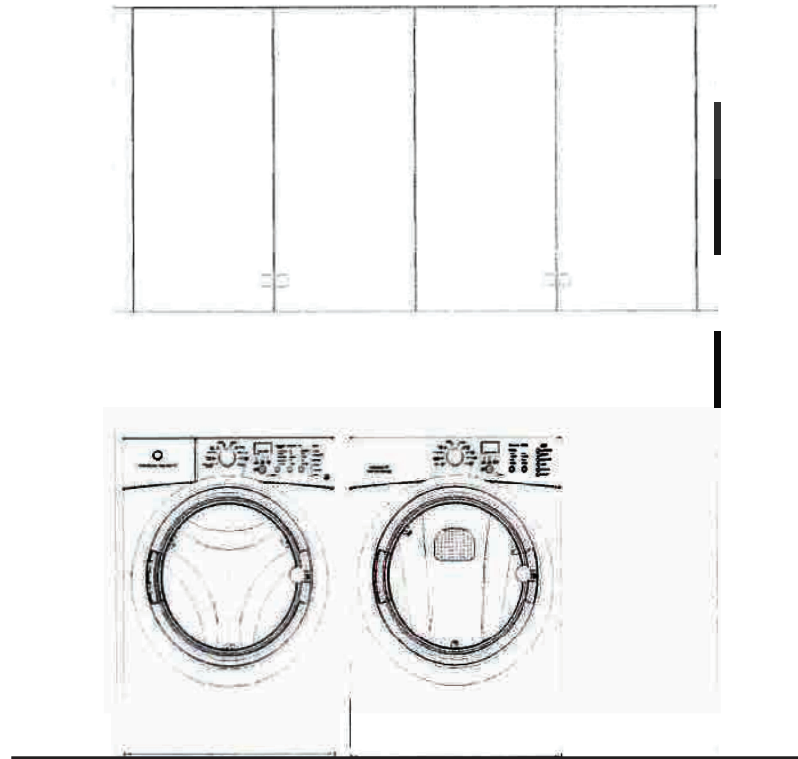
**TUB  
FAUCET**  
Moen Align  
Matte  
Black -  
T393BL

**11**

**SHOWER FIXTURE**  
Moen S176bl Matte Black  
Rain Shower Head with  
12" Matte Black Straight  
Arm From Ceiling and  
Moen Align T2192EPBL  
Matte Black Shower  
Faucet. Includes Moen  
Align T4192BL Matte Black  
Transfer Valve.

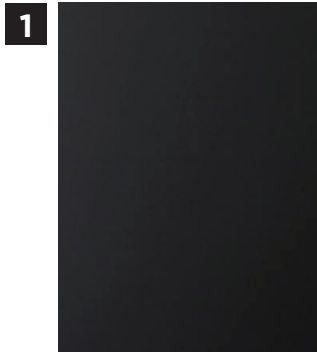
SPACIOUS LAUNDRY ROOM  
WITH AMPLE STORAGE AREA

LAUNDRY

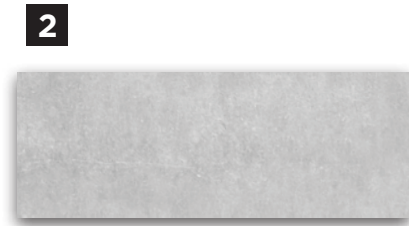


WASHER - DRYER LAY-OUT  
& CABINET LAY-OUT

E.&O.E.



**1**  
**UPPER CABINETS**  
Lastra Ultra Matte -  
Nightfall



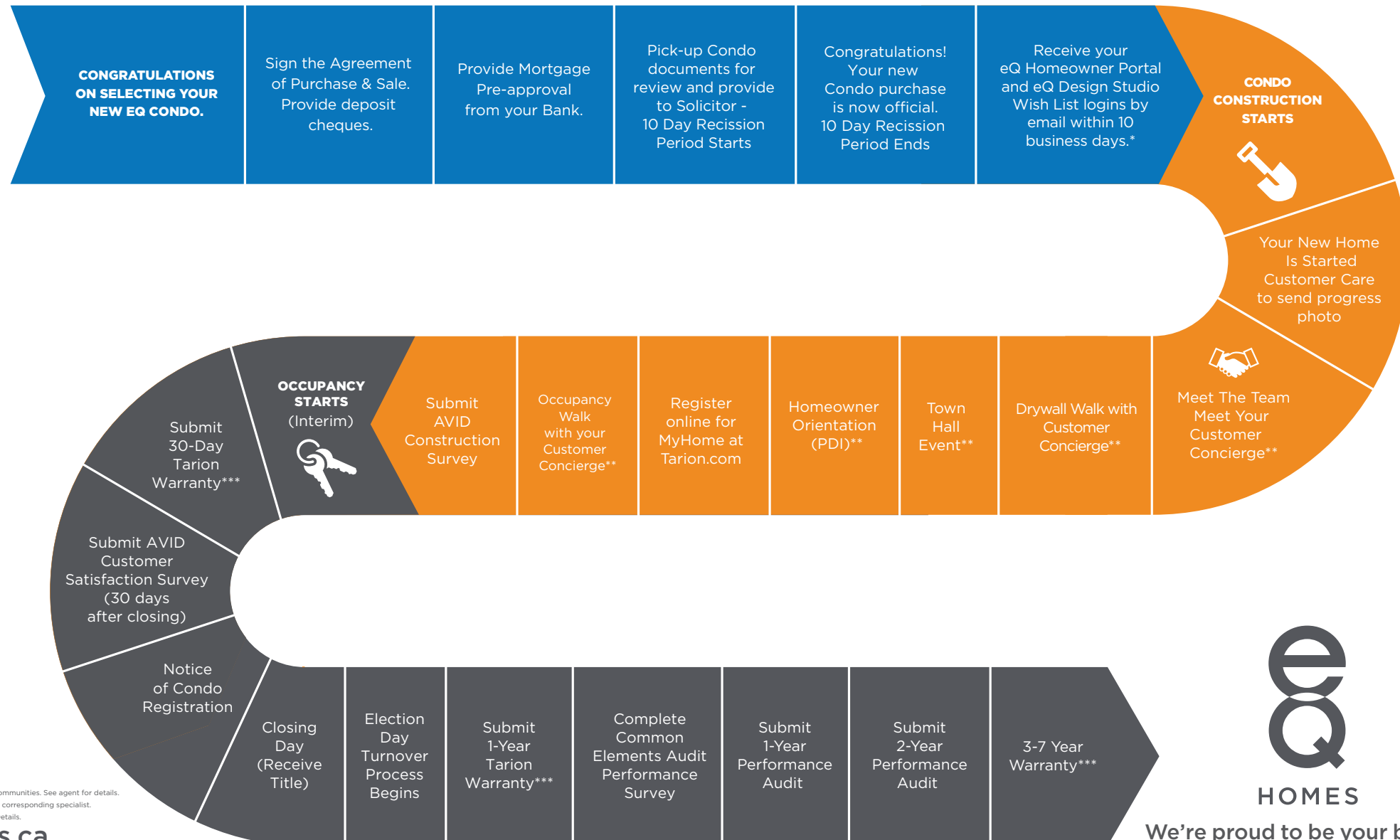
**2**  
**FLOOR TILE**  
Euro 12x24 Pasha  
Nexus Ice -  
Installed Stacked



**3**  
**HARDWARE**  
BP57606170

# The eQ Designer Finished Condo Buyer's Journey.

**Enduring Quality.** It starts with the design of your eQ Home and continues throughout the entire home buying process. We will be by your side, step by step, answering your questions - before, during and after construction. Because the qualities of confidence and peace of mind should endure longest of all



**HOMES**

We're proud to be your builder.

\* Wish List not available for all communities. See agent for details.

\*\* Dates to be sent via email from corresponding specialist.

\*\*\* See your Tarion Warranty for Details.



223 MAIN STREET, OTTAWA, ON  
K1S 1C5  
TEL: 613-569-3043  
EMAIL: [sales@greystonevillage.ca](mailto:sales@greystonevillage.ca)



All drawings are artist's concept and may vary slightly from the final product. Actual usable floorspace may vary from stated area, and square footage has been calculated based on usable living space according to the TARION rules and does not include garage or unfurnished basement areas. Drawings may show optional features which may not be included in the base price. Bulkheads & box outs may be required as chases for plumbing & mechanical. Garage main door location, if applicable, may vary subject to grade. In an ongoing review of homeowner's needs, changes may have been incorporated into our "New Home Features" and construction techniques. Specifications subject to change without notice. Manufacturers' images are shown and may differ from the final product. E. & O.E. September 2020.