

"Step into this intelligently crafted penthouse where modernity seamlessly integrates with functionality, creating an environment where every corner is optimized for efficient living.

Oversized windows fill the space with natural light, seamlessly blending with the neutral colour palette to create an open, refreshing atmosphere that enhances the stunning views.

Each area is carefully crafted to optimize its function, starting with a spacious foyer and ample storage at the entrance. The generously sized kitchen, featuring an 8' island, flows seamlessly into the living area, ideal for casual meals or entertaining guests. Adjacent, a separate dining or den area offers ample space for gatherings with loved ones.

Both bedrooms feature well-proportioned closets, and the second bedroom is also versatile as a home office area. In this thoughtfully designed home, every element ensures comfortable and spacious living."



GREYSTONEVILLAGE.CA

DESIGNED BY RYAN DESIGN INTERNATIONAL



PENTHOUSE

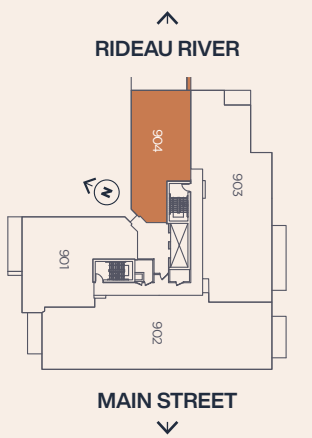
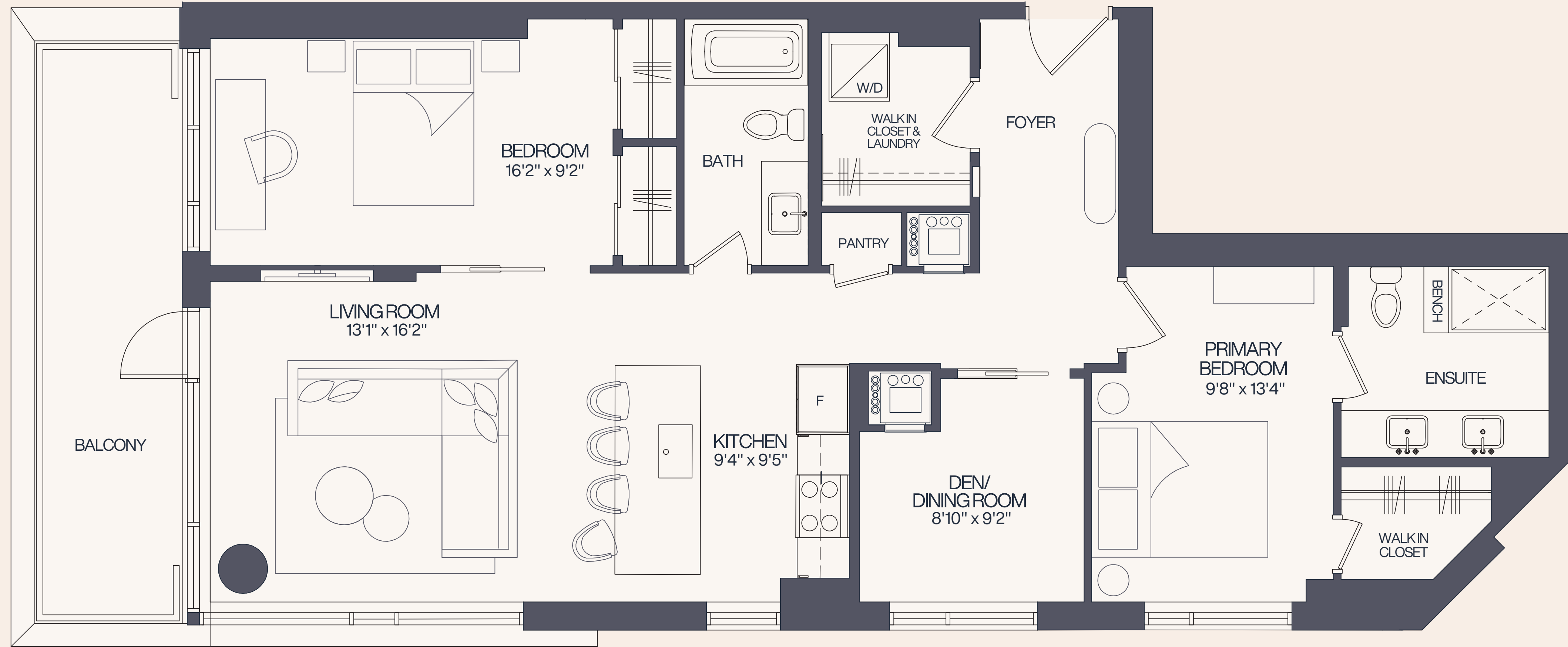
PENTHOUSE | 904

1,204 SF. EXT. 139 SF.

2 BEDROOMS + DEN | 2 BATHROOMS

“Step into this intelligently crafted penthouse where modernity seamlessly integrates with functionality, creating an environment where every corner is optimized for efficient living.”

- TANNER VINE INTERIORS



Materials, specifications and floor plans are subject to availability, substitution and modification without notice. All renderings are artist's concept. All floor plans have approximate dimensions. Actual usable floor space may vary from stated floor plan. Windows, doors and balcony size and location may vary. Balcony/Terrace, as applicable. *Renderings were completed prior to framing the penthouse suites and as such the showers layout have changed, see agent for details. All dimensions are subject to normal construction variances. Some features may vary by suite design. Furniture not included. E. & O.E.





GREYSTONEVILLAGE.CA

DESIGNED BY RYAN DESIGN INTERNATIONAL

904

FEATURES &
FINISHES

CABINETS & COUNTERTOP

KITCHEN/PANTRY

Hinges: Soft Closing
Doors #1: MDF Slab/Sarsen Grey Matte
Doors #2: Walnut Veneer FC Slab/
Porcini Matte
Handle #1: Cumberland Pull – Ash Gray
Handle #2: Clarence Knob – Grey
Countertop: Hanstone Color
Le Blanc 1 1/4"
Backsplash: Hanstone Color
Le Blanc 3/4"

MAIN BATHROOM

Hinges: Soft Closing
Doors: MDF Slab/Sarsen Grey Matte
Handle: Clarence Knob – Grey
Countertop: Hanstone Color
Le Blanc 1 1/4"
Backsplash: Hanstone Color
Le Blanc 3/4"

ENSUITE

Hinges: Soft Closing
Doors: MDF Slab/Sarsen Grey Matte
Handle: Clarence Knob – Grey
Countertop: Hanstone Color
Le Blanc 1 1/4"
Backsplash: Hanstone Color
Le Blanc 3/4"

APPLIANCES

Range: Bosch
Finish: Stainless Steel & Black

Refrigerator: Fisher & Paykel
Finish: Panel Ready

Dishwasher: Bosch
Finish: Panel Ready

Hood Fan Insert: Faber
Finish: Stainless Steel

Microwave: Sharp
Finish: Stainless Steel & Black

Washer/Dryer: LG
Finish: White

PLUMBING

KITCHEN

Main Sink: Franke Peak Undermount Sink
Finish: Stainless Steel

Faucet: Brizo Jason Wu Faucet
Finish: White

MAIN BATHROOM

Sink: American Standard Studio
Finish: White

Faucet: Delta Trinsic Faucet
Finish: Chrome

Bathtub: MAAX Exhibit IFS Tub
Finish: White

Shower Kt: Delta Thermostatic
Tub & Shower Trim
Finish: Chrome

ENSUITE

Sink: American Standard Studio
Finish: White

Faucet: Brizo Odin Faucet
Finish: Chrome

Shower Kit: Delta Vero 17 Series
Finish: Chrome

TILE

Laundry/Closet: Fjord Ice
Size: 24x24

Main Bathroom #1: Fjord Ice
Size: 24x24

Main Bathroom #2 (Tub Walls):
Soho Vintage Grey Glossy
Size: 4x12

Primary Ensuite #1 (Floor):
Attitude White Natural
Size: 24x48

Primary Ensuite #2 (Shower Walls):
Soho Vintage Grey Glossy
Size: 4x12



*Renderings were completed prior to framing the penthouse suites and as such the showers layout have changed, see agent for details Artist's concept. E. & O. E.



Artist's concept. E. & O. E.

LIGHTING

Kitchen Island: Kuzco Vesper
Finish: Black

Living Room: Mitzi Wynter
Finish: White
Generation Lighting Sawyer
Finish: Black/White

Dining Room: Generation Lighting
Sawyer
Finish: Black/White

Main Bathroom: Generation Lighting
Keaton Medium
Finish: Chrome

Guest Bedroom: Hudson Valley Scout
Finish: Polished Nickel/Black

Primary Ensuite: Generation Lighting
Keaton Large
Finish: Chrome

Primary Bedroom: Generation Lighting Cath
Finish: Polished Nickel/Black

Primary Bedroom Closet: Hudson
Valley Scout
Finish: Polished Nickel/Black

INTERIOR FINISHES

Door Levers Flat Black

4" flat wood baseboard and 2 1/4" door
casing in

Madison-style shaker interior suite doors

Madison-style shaker Sliding and Pocket
doors (as per plan)

Oversized windows to bring nature inside.

Engineered Hardwood Flooring: Arcadian
Oak Engineered Hardwood Flooring

Ceilings for Penthouse floors are
approximately 10' high slab to the underside
of the slab.

Smooth finished ceilings painted with white
Zero VOC paint

Materials, specifications and floor plans are subject to availability, substitution and modification without notice. All renderings are artist's concept. All floor plans have approximate dimensions. Actual usable floor space may vary from stated floor plan. Windows, doors and balcony size and location may vary. Balcony/Terrace, as applicable. *Renderings were completed prior to framing the penthouse suites and as such the showers layout have changed, see agent for details. All dimensions are subject to normal construction variances. Some features may vary by suite design. Furniture not included. E. & O. E.

