

“The interior design of this one-of-a-kind penthouse aims to evoke a sense of serene elegance and understated luxury. We’ve opted for materials like rift and quarter-cut white oak, porcelain ceramics with a travertine and onyx appearance, chosen for their tactile qualities.

The foyer generously separates the penthouse’s private areas from the main living space, creating an ideal setting for entertaining. The spacious open-concept kitchen, living, and dining area fosters social interaction with family and friends.

Thoughtfully selected premium finishes and meticulous design underscore this home’s tranquil, minimalist aesthetic.”



GREYSTONEVILLAGE.CA

DESIGNED BY RYAN DESIGN INTERNATIONAL

PENTHOUSE



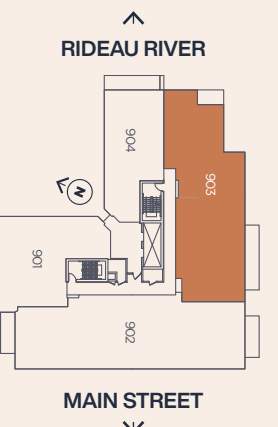
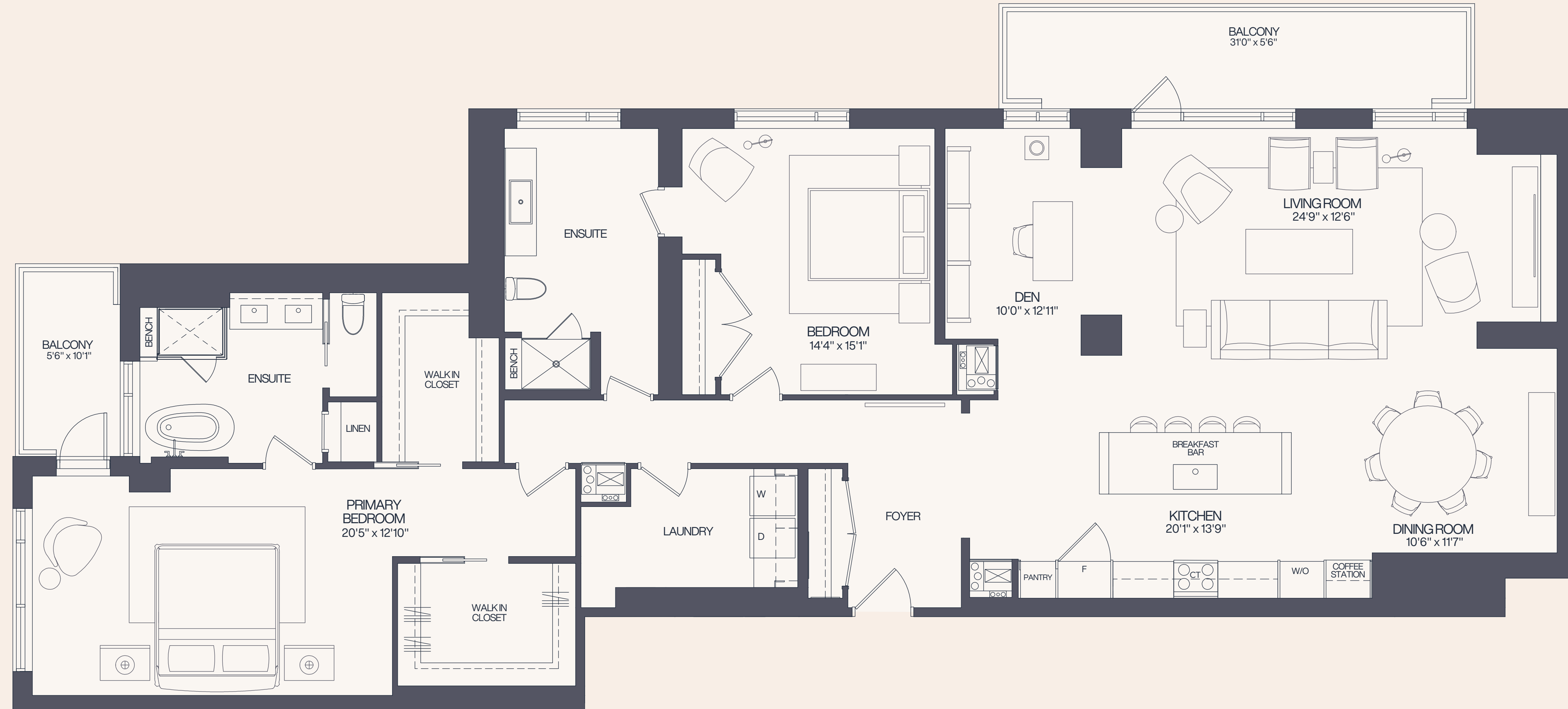
PENTHOUSE | 903

2,380 SF.
EXT. 227 SF.

2 BEDROOMS + DEN | 2 BATHROOMS

“The interior design of this one-of-a-kind penthouse aims to evoke a sense of serene elegance and understated luxury.”

- TANNER VINE INTERIORS



Materials, specifications and floor plans are subject to availability, substitution and modification without notice. All renderings are artist's concept. All floor plans have approximate dimensions. Actual usable floor space may vary from stated floor plan. Windows, doors and balcony size and location may vary. Balcony/Terrace, as applicable. *Renderings were completed prior to framing the penthouse suites and as such the showers layout have changed, see agent for details. All dimensions are subject to normal construction variances. Some features may vary by suite design. Furniture not included. E. & O.E.





GREYSTONEVILLAGE.CA

DESIGNED BY RYAN DESIGN INTERNATIONAL

903

FEATURES & FINISHES

CABINETRY & COUNTERTOP

KITCHEN/PANTRY

Hinges: Soft Close
Door #1: MDF - Slab Style - Lacquer Cremini
Door #2: Oak White - Rift Cut Veneer - Slab Style - Wild Honey
Handle: Integrated Handle Track - Match Door Colour
Appliance Handle: Emtek - Appliance Bar Pull - Polished Nickel
Countertop Quartz: - Silestone Iconic White 1 1/4"
Countertop: (Island Columns & Backsplash) Marble - Crema Marfil 3/4"

ENSUITE

Hinges: Soft Close
Door: MDF - Slab Style - Lacquer Cremini
Knob: Emtek - Select Pull - Polished Chrome
Countertop: Quartz - Silestone Nolita & 3/4"
Shower Bench Top: Quartz - Silestone Nolita 3/4"

MAIN BATHROOM

Hinges: Soft Close
Door: MDF - Slab Style - Lacquer Cremini
Knob: Emtek - Knob Conical Smooth - Polished
Countertop: Quartz - Silestone Nolita & 3/4"
Shower Bench Top: Quartz - Silestone Nolita 3/4"

LAUNDRY ROOM

Hinges: Soft Close
Door: MDF - Slab Style - Lacquer Cremini
Knob: Emtek - Knob Conical Smooth - Matte Black
Countertop: Quartz - Silestone Nolita & 3/4"

APPLIANCES

Cooktop: Thermador
Finish: Titanium
Wall Oven/Speed: Thermador
Finish: Stainless Steel
Refrigerator: Thermador
Finish: Panel Ready
Dishwasher: Thermador
Finish: Stainless Steel
Hood Fan Insert: Thermador
Finish: Stainless Steel

PLUMBING

KITCHEN

Main Sink: Kindred Brookmore
Finish: Stainless Steel
Faucet: Brizo Odin - Pull-Down
Finish: Polished Nickel

MAIN BATHROOM

Sink: Kohler Iron Plains - Drop In
Finish: White
Faucet: Brizo Odin - Two Handle - Wall Mount
Finish: Chrome

Shower Kit: Delta Trinsic 17
Finish: Chrome

ENSUITE

Shower Kit: Delta Trinsic 17 Series
Finish: Chrome

Bathtub: Free standing
Finish: White

Tub Filler: Brizo Odin Wall Mount Two Handle
Finish: Chrome

Sink: American Standard Studio
Finish: White

Faucet: Brizo Odin - Widespread
Finish: Chrome

TILE

Foyer & Laundry Room: Via Appia White Honed
Size: 24x48

Main Bathroom Floor: Prestigio Onyx White Lux
Size: 30x30

Main Bathroom Shower Walls: Via Appia White Honed
Size: 24x48

Ensuite Floor: Prestigio Onyx White Lux
Size: 30x30

Ensuite Shower Walls: Prestigio Onyx White Lux
Size: 30x30



Artist's concept. E. & O. E.



*Renderings were completed prior to framing the penthouse suites and as such the showers layout have changed, see agent for details Artist's concept. E. & O. E..

LIGHTING

Kitchen Track: Kendal Lighting Magna Black Surface 3M
Finish: Black

Dining Room Chandelier: Visual Comfort Talia Large
Finish: Guild - Clear Swirl

Main Bathroom: Visual Comfort Clark One Light
Finish: Midnight Black

Bedroom: Troy Lighting Arnie
Finish: Brass / Black

Primary Bedroom Closet: Mitze Asime
Finish: Brass

INTERIOR FINISHES

Door Levers Matte Black

4" flat wood baseboard and 2 1/4" door casing in

Madison-style shaker interior suite doors

Madison-style shaker Sliding and Pocket doors (as per plan)

Oversized windows to bring nature inside.

Engineered Oak Hardwood Flooring: White Oak Natural R&Q

Ceilings for Penthouse floors are approximately 10' high slab to the underside of the slab.

Smooth finished ceilings painted with white Zero VOC paint

TEMPERATURE CONTROL

A forced air system heats and cools on demand by way of an individual heat unit and blower located in your suite. Use will be separately metered and billed to you directly

Your suite's climate is controlled by a smart thermostat

An economical central boiler supplies heated water on demand to the heat pump operation

Hot water is provided by a central boiler system within roof mechanical room

The amount of water consumed in your suite for personal use will be separately metered and billed to you directly (as per plan)

Hood fan, dryer vent and bathroom vent all exhausted directly outdoors through independent ducts

Each suite has its own ERV ventilation system, exhausting stale air from the suite and providing fresh outdoor air in exchange.