

“The interior design of this well-laid-out penthouse draws loose inspiration from mid-century aesthetics, embracing both boldness and minimalism simultaneously.

Engineered oak flooring in a warm mid-brown hue complements sand-coloured walls, fostering a cozy ambiance contrasted by soft white and ebony oak custom cabinetry.

To enhance the open concept living area, we selected Denton’s Trance Onirika for the kitchen backsplash, known for its durable nature and striking veining. This unique penthouse is designed to captivate even the most discerning buyer.”



GREYSTONEVILLAGE.CA

DESIGNED BY RYAN DESIGN INTERNATIONAL

# PENTHOUSE

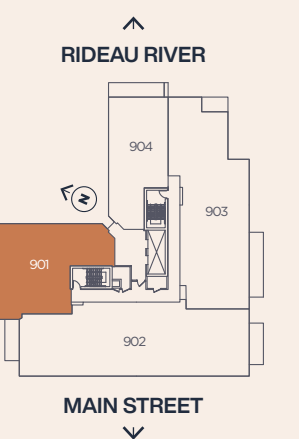
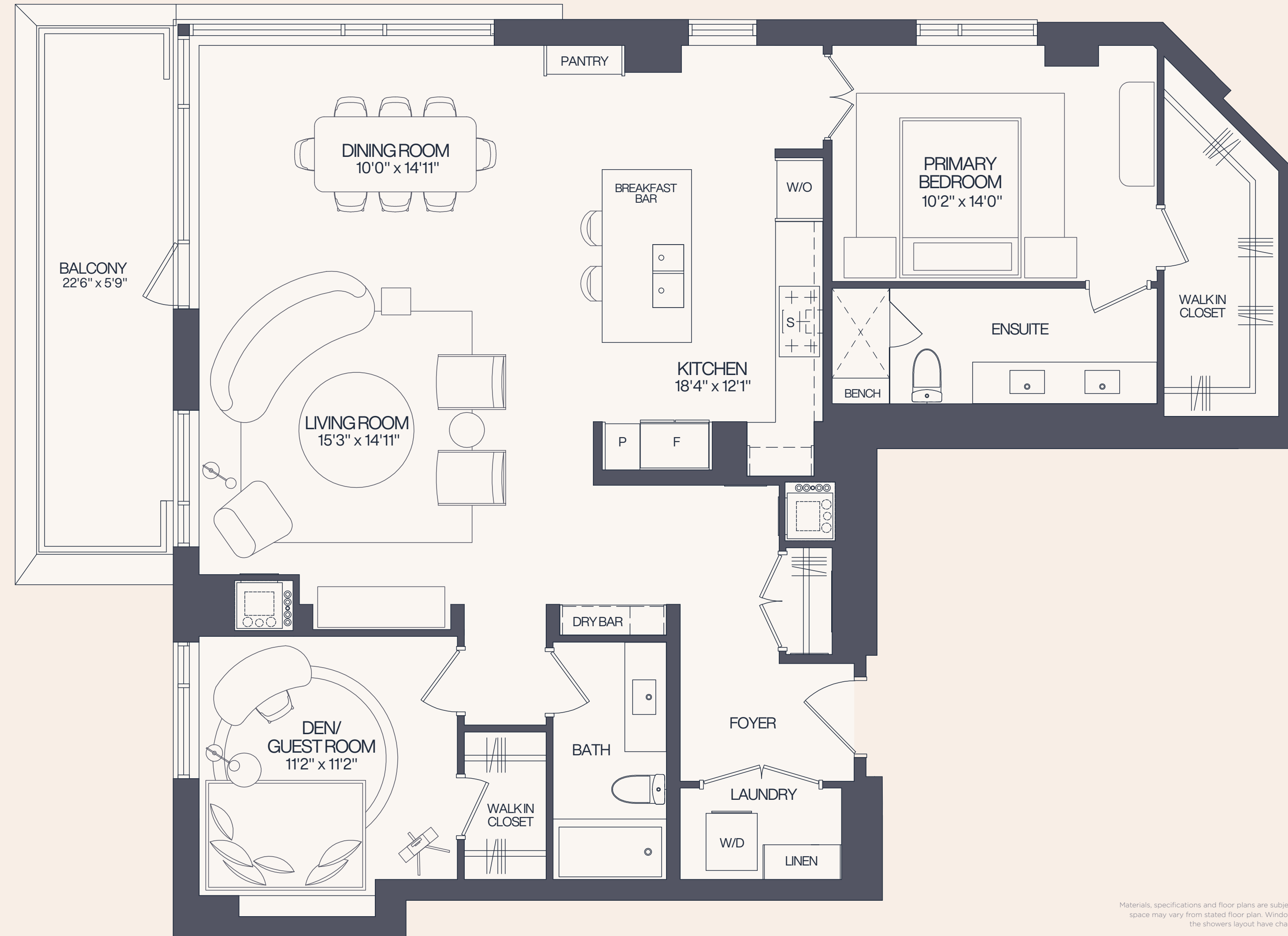
PENTHOUSE | 901

1,472 SF.  
EXT. 137 SF.

2 BEDROOMS | 2 BATHROOMS

“The interior design of this well-laid-out penthouse draws loose inspiration from mid-century aesthetics, embracing both boldness and minimalism simultaneously.”

- TANNER VINE INTERIORS



Materials, specifications and floor plans are subject to availability, substitution and modification without notice. All renderings are artist's concept. All floor plans have approximate dimensions. Actual usable floor space may vary from stated floor plan. Windows, doors and balcony size and location may vary. Balcony/Terrace, as applicable. \*Renderings were completed prior to framing the penthouse suites and as such the showers layout have changed, see agent for details. All dimensions are subject to normal construction variances. Some features may vary by suite design. Furniture not included. E. & O.E.





Artist's concept. E. & O. E.



Artist's concept. E. & O. E.



[GREYSTONEVILLAGE.CA](http://GREYSTONEVILLAGE.CA)

DESIGNED BY RYAN DESIGN INTERNATIONAL

# 901

## FEATURES & FINISHES

## CABINETRY & COUNTERTOPS

### KITCHEN/PANTRY

**Hinges:** Soft Close  
**Doors:** MDF - Slab Style - Lacquer Cremini  
**Handles:** Integrated Handle Track - Match Door Color, Emtek - Westridge Pull - Satin Brass  
**Appliance Handle:** Emtek - Appliance Pull - Westridge - Satin Brass  
**Countertop #1:** Quartz - Silestone Nolita 3/4"  
**Countertop #2:** Quartz - Silestone Iconic White 1 1/4"  
**Backsplash:** Dekton - Trance - Onirika

### DRY BAR

**Hinges:** Soft Close  
**Doors:** Oak White - Rift Cut Veneer - Slab Door/Vertical Grain - Stain Ebony  
**Handles:** Integrated Handle Track - Match Door Color  
**Countertop:** Matches Doors

### ENSUITE

**Hinges:** Soft Close  
**Doors:** Oak White - Rift Cut Veneer - Slab Door/Vertical Grain - Stain Ebony  
**Knob:** Emtek - Prosser Knob - Satin Brass  
**Countertop:** Quartz - Silestone Nolita 3/4"  
**Backsplash:** Dekton - Trance - Onirika  
**Shower Niche:** Quartz - Silestone Nolita 3/4"

### MAIN BATHROOM

**Hinges:** Soft Close  
**Doors:** Oak White - Rift Cut Veneer - Slab Door/Vertical Grain - Stain Ebony  
**Knob:** Emtek - Prosser Knob - Satin Brass  
**Countertop:** Quartz - Silestone Nolita 3/4"

## APPLIANCES

**Cooktop:** Bosch  
**Finish:** Black  
**Wall Oven/Speed:** Bosch  
**Finish:** Stainless Steel  
**Refrigerator/Freezer:** Fisher & Paykel Integrated  
**Finish:** Panel Ready  
**Dishwasher:** Bosch  
**Finish:** Stainless Steel  
**Hood Fan:** Zephyr Layers  
**Finish:** Stainless Steel

## PLUMBING

### KITCHEN

**Main Sink:** Kindred Brookmore  
**Finish:** Stainless Steel  
**Faucet:** Brizo Artesso - Bridge/Side Sprayer  
**Finish:** Polished Chrome

### MAIN BATHROOM

**Standard Sink:** American Standard Studio  
**Finish:** White  
**Faucet:** Brizo Invari  
**Finish:** Chrome

**Shower Head:** Delta Saylor  
**Finish:** Chrome

### ENSUITE

**Standard Sink:** American Standard Studio  
**Finish:** White  
**Faucet:** Brizo Invari  
**Finish:** Chrome

**Shower Head:** Delta Universal Shower  
**Finish:** Chrome

**Shower Kit:** Delta Saylor Monitor  
**Finish:** Chrome



## TILE

**Laundry Closet:** Elegance Pro White Natural  
**Size:** 12x24  
**Main Bathroom Floor:** Shale Sand  
**Size:** 24x48  
**Main Bathroom Tub Walls:** Fayenza Greige Wall/Gloss  
**Size:** 2.5x5  
**Ensuite Floor:** Shale Sand  
**Size:** 24x48  
**Ensuite Shower Walls:** Fargblok Sabbia Lucido Wall/Gloss  
**Size:** 2x6

## LIGHTING

**Kitchen:** Troy Lighting Modesto  
**Finish:** Gold Leaf  
Visual Comfort Top Hat Mini Monopoint  
**Finish:** Antique Brass  
**Dining Room:** Visual Comfort Rousseau Grand Eight  
**Finish:** Bronze/Etched Crystal  
**Main Bathroom:** Visual Comfort Amelie  
**Finish:** Burnished Brass  
**Bedrooms, Laundry, Closets:** Mitz Livvy  
**Finish:** Old Bronze  
**Ensuite:** Visual Comfort Amelie  
**Finish:** Burnished Brass

## INTERIOR FINISHES

Door Levers Flat Black  
4" flat wood baseboard and 2 1/4" door casing  
Madison-style shaker interior suite doors

Madison-style shaker Sliding and Pocket doors (as per plan)

Oversized windows to bring nature inside

Engineered Oak Hardwood Flooring Torlys Everest XP Premier Kamee

Ceilings for Penthouse floors are approximately 10' high slab to the underside of the slab

Smooth finished ceilings painted with white Zero VOC paint

## TEMPERATURE CONTROL

A forced air system heats and cools on demand by way of an individual heat unit and blower located in your suite. Use will be separately metered and billed to you directly

Our suite's climate is controlled by a smart thermostat

An economical central boiler supplies heated water on demand to the heat pump operation

Hot water is provided by a central boiler system within roof mechanical room

The amount of water consumed in your suite for personal use will be separately metered and billed to you directly (as per plan)

Hood fan, dryer vent and bathroom vent all exhausted directly outdoors through independent ducts

Each suite has its own ERV ventilation system, exhausting stale air from the suite and providing fresh outdoor air in exchange