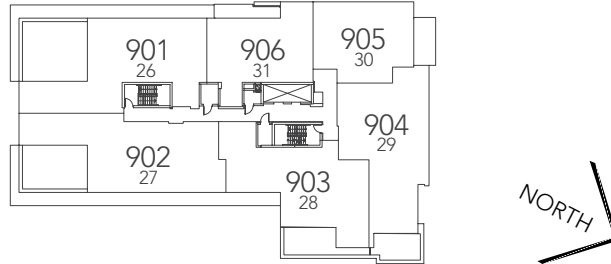
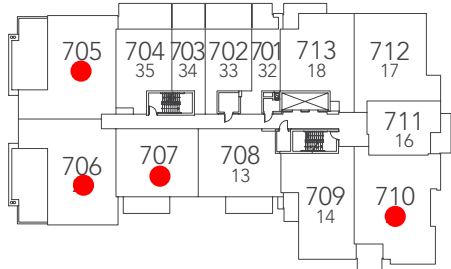


MODEL	INDOOR SQ. FT.	OUTDOOR SQ. FT. **	FLOORS	PRICED FROM***
SMART BACHELOR				
32*	377	80	2-7	\$199,900
33*	514	147	2-7	\$269,900
34*	406	124	2-7	\$219,900
ONE BEDROOM				
2	631	288	1	\$359,900
6	626	105	8	\$359,900
7	652	113	8	\$364,900
16*	593	100	7-8	\$326,900
35	669	186	2-7	\$349,900
36	710	101	1	\$359,900
ONE BEDROOM +				
1	902	322	1	\$459,900
3	675	288	1	\$385,900
5	747	510	1	\$436,900
10	709	142-145	2-3	\$372,900
37	700	233	1	\$374,900
39	756	145	1	\$399,900
TWO BEDROOM				
12	897	126-328	2-5	\$454,900
13	880	126-326	2,4,5,6	\$451,900
17	1096	76	3-8	\$538,900
18	954	109	2-8	\$466,900
38	942	131	1	\$479,900
TWO BEDROOM +				
9	1217-1224	86-92	2-5	\$616,900
11	1276-1305	77-88	2-3	\$648,900
14	1097-1119	69-77	2-8	\$542,900
15	1283	104-108	3-4	\$643,900
19	1379	104	2	\$687,900
PENTHOUSE				
26	1755	574	9	\$1,159,900
27	1771	420	9	\$1,199,900
28	1649	261	9	\$989,900
29	1712	182	9	\$1,014,000
30	1109	156	9	\$725,900
31	1210	125	9	\$779,900

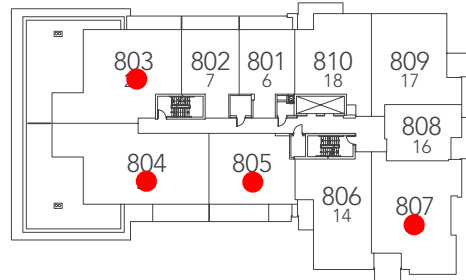
FLOOR 9/PENTHOUSE



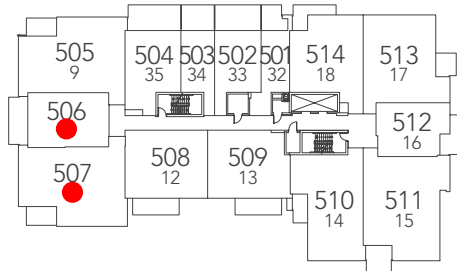
FLOOR 7



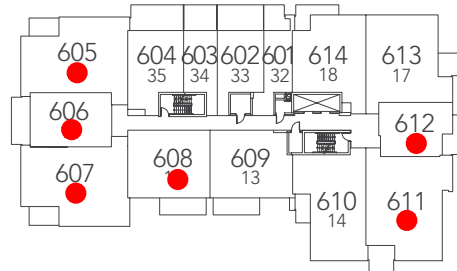
FLOOR 8



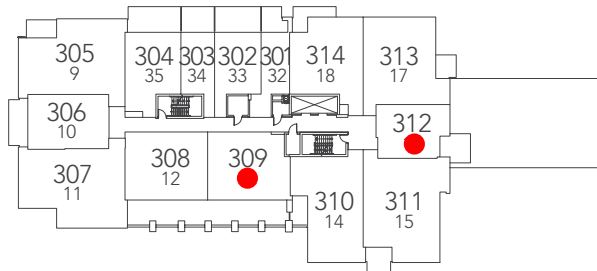
FLOOR 5



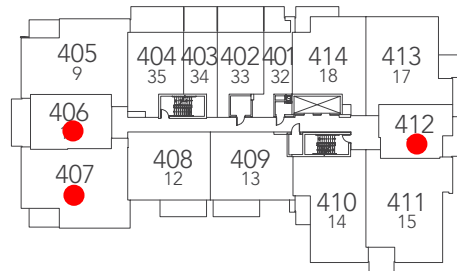
FLOOR 6



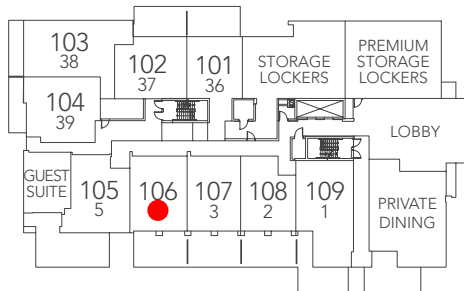
FLOOR 3



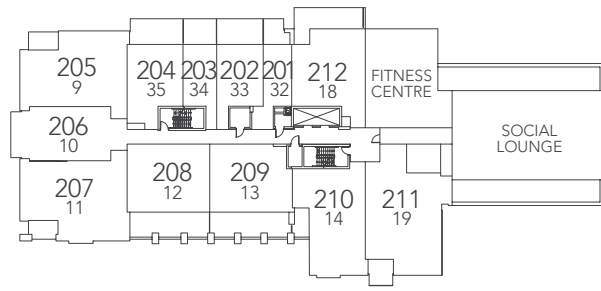
FLOOR 4



FLOOR 1



FLOOR 2



CONDO FEES:

\$0.44 PER SQ. FT.

Includes: Building insurance. Reserve fund contribution. Upkeep of common areas. Water, Heating / Air Conditioning of common areas. Snow removal and landscaping. Janitorial services. The fees do not include individual unit electricity, water and hydro consumption which will be sub-metered.

PARKING:

Parking is available for \$35,000/Spot

Motorcycle Parking is available for \$15,000/Spot

Please note that there is no parking available for Models 16, 32, 33 & 34.

STORAGE LOCKER:

One Storage locker is included in the purchase price.

PREMIUM STORAGE LOCKER:

Premium Storage lockers are available for \$10,000+/Locker

DEPOSIT STRUCTURE:

15% Total Deposit

1. \$5,000 - At time of signing
- 2: 1/3 - (less initial deposit) 30 days following initial deposit date
- 3: 1/3 - 90 days following date of execution
- 4: 1/3 – Start of construction

All deposits to be made out “Nelligan O'Brien Payne LLP, in Trust”